

3. ia u sying uba ngi mut ban buh symbai dei ban pdem shuwa kumba 30 minit ha ka dawai Dithane M- 45 lane ha ka dawai Ridomil MZ– 72 kumba 2.5 gm lane ½ siang sha ha ka shi litre ka um na ka bynta shi kilo u symbai.

4. Ha ki jaka rep ba la kynrei palat kane ka jingpang pyut dei ban khleh ia ka kyndew da ka dawai Ridomil.

Ki lad jingiada ynda lah dep thung ia u sying:

1. Lada iohi ba don ka jinglang um ha ka jaka rep dei ban tih da ki nala duid narud.
2. Lada iohi ba don ki jingthung kiba la pyni dak ba ki don ia kane ka jingpang shi syndon dei ban phut ia u tynrai dep nangta sa thang sha jngai.
3. Lada kynrei palat kane ka jingpang pyut man u snem dei ban rep noh da ki wei pat ki jait jingthung kum u riewhadem, u presbin , u motor lane u kba.

4.Ngi lah ruh ban pyndonkam da ki dawai thymmai kiba la don ia ki khniang jingpang kiba bha kiba lah ban ialeh pyrshah ia kane ka jingpang pyut ha u sying kum u *Trichoderma herzianum* bad u *Trichoderma virens*.

La pynmih bad pynsaphriang da:-
U Programme Co-ordinator
Krishi Vigyan Kendra(KVK),
Jaintia Hills, Directorate
of Agriculture Govt. of Meghalaya
Rymphum Jowai-793150

**KI LAD JINGIADA NA
KI KHNIANG BAD KI
JINGPANG HA U KBA**

**LANE KA IPM HA U
KBA**

La pynbit pynbiang da i:
Smt. R.W.Rangad
Subject Matter Specialist
(Plant Protection)



**KRISHI VIGYAN KENDRA
(KVK),
JAINTIA HILLS**



**DIRECTORATE OF AGRICULTURE
GOVERNMENT OF MEGHALAYA
RYPHUM, JOWAI– 793150**

KI DAW BA DUNA KA JINGMIH U KBA HA KA JYLLA ME-
GHALAYA LANE KA MUT AIU KA IPM BAD KIEI KI MAT
BA KONGSAN KA JONG KA

KA MAT BA HAPDENG DUH JONG KA IPM KA LONG BA
NGIN IADA IA U JINGTHUNG U JONG NGI SHUWA DA
KI LAD JINGIADA BA KHLEM PYNDONKAM NYNGKONG
DA KI DAWAI KHNIANG TAD HADUH BA KI LAH BUN
KI KHNIANG . Katta ka mut ba ka jingsiat ia ki dawai
khniang ka dei ka lad ba khatduh eh (last resort for manage-
ment). Ki lad jingiada ba khlem pyndonkam da ki dawai ki
long kiba bun bad ki long ruh kiba myntoi shibun namar
kine ki lad ki ia trei lang bad ka mariang bad ka pynneh
pynsah ia ka jingkhuid ki um ki wah, ka khyndew, kiwei
pat ki jingim ba don ha pyrthel bad ka pynneh pynsah ia ka
koit ka khiah



KHNIANG BA PYNJULOR IA U KBA KI DON KUM-
BA ???????? TYLLI HYNREI HANGNE LA THOH TANG
SHAPHANG KITO KI JAIT KHNIANG BA KHAM PYNJU-



KI LOR IA U KBA KA LA KA JONG NGI KI
JUR HA JYL-

YA

3.GUNDHI BUG (*Leptocorisa oratorius*)/ Khniang
kseng
KI DAK KI SHIN
Une u khniang u kjit ia ka um dud na u syntiew kba
bad u pynlong stait ia u kba
Ka jingdon jong kine ki khniang ka pynduna shibun
ia ka jingmih

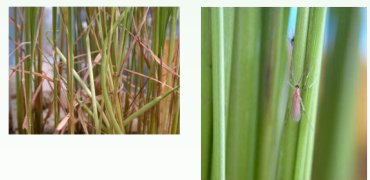
4.RICE HISPA /Khniang bam sla
KI DAK KI SHIN
Ki khniang ki long rong blu
Kine ki khniang ki bam ia ki sla bad lada jur ka
jingjulong ka hali kba ka long kumba lah shah thang



5.RICE CASEWORM/ Khniang shna skum
KI DAK KI SHIN
Kine ki khniang ki khliah ia ki kliar sla bad ki shna
tyndong da kaba kli baroh arliang ka sla bad ki
shong hapoh
Ki bam ia ki sla bad ki per ha um



6.GALL MIDGE(*Orseolia oryzae*)
KI DAK KI SHIN
Ki sla ynda lah shah pynjulong ha une u jait khniang
ki kylla long kum ki sla pyiat. U khniang
ba pynjulong u ia syn-riem dur kum u
pyrjong



7.RICE WEEVIL/ Khniang smuit

KI LAD JINGIADA
KHLEM DAWAI
Pynedonkam da u symbai Shahsarang 1, Lamp-
nah1, Bhalum 1and 2
Lum bad pynduh ia ki pyllen ha ka jaka ba sara
Khap noh ia ki kliar sla ha ka jaka ba sara shuwa
ban rah trai ban pynduna ia u khniang bam-
nud bad ia u khniang kli sla
Pynduna ia ka sbob shini
Pyllait da u khniang *Trichogramma japonicum*
lane u *T. chilonis* kumba 50,000 haduh 1 lac
tylli ki khniang ha ka shi hactre ka jaka hadein
15 sngi bal ah dep rah tyntraib an pynduna ia
u khniang bamnud bad ia u khniang kli sla
Da kaba pyndonkam da ka shrip (Baffle trap) ba la
buh da ka tham lane daka dohkha rit ba la iap
bad ba pyut khnang ba ki khniang kseng kin
wan boi hapoh kane ka shrip
Buh ia kine ki shrip shuwa uban puh syntiew u
kba
Pynkhuid ia ki nuit ki nier ki phlang ki kynbat ba
don sharud ka hali kba
Pyntuid noh ia ka um na ka hali lada don ki
tyndong jong u khniang shna skum khnang ba
kan rah noh ia ki tyndong jong une u khniang
Lah ruh ban shu pynhap ia kinie ki jait khniang
bad ki tyndong jong ki da kaba tan da u tyllai
na shiliang sha shiliang
Pynduh ia u jyntang kba ynda lah dep ot kba da
kaba thang khnang ban pynduna ia ki jait
khniang ba shong